



vito



SVR-ARCHITECTS

/rj/o

architectenburo
jef van oevelen bv

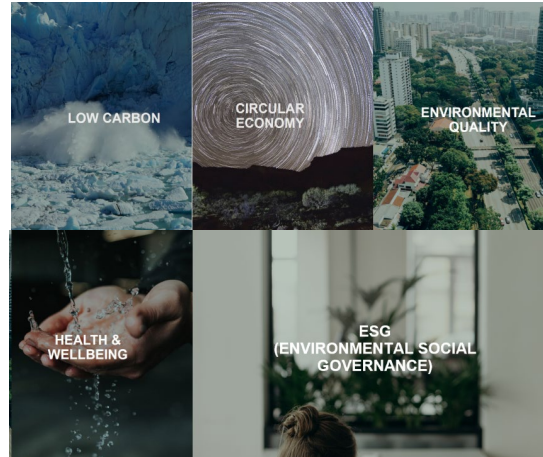
WAT MAAKT ONS TEAM, ONS ONTWERP UNIEK VOOR



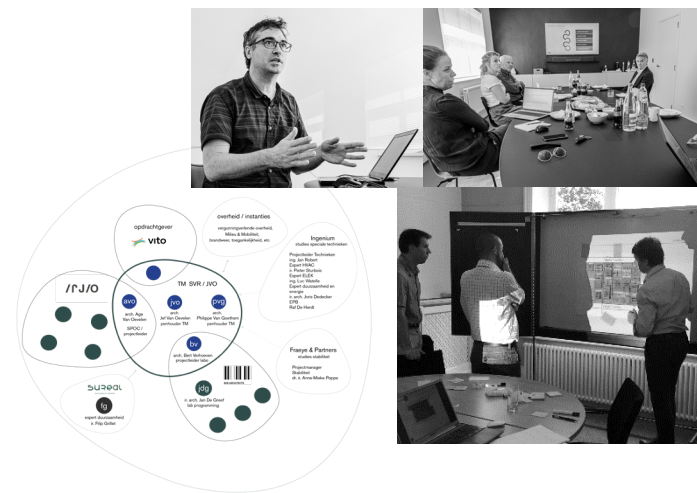
Vertrouwen



Innovatie



Team



Onderzoek



- duurzame relaties met wekerende klanten
- waardering van wereldspelers en veeleisende opdrachtgevers
- ruime ervaring met projecten met de wensen, waarden en missie van VITO

- duurzaamheid is de norm
- geïntegreerd & pragmatisch ontwerpen van wat echt nodig en wenselijk is
- expertise inzake materialen, energieprestatie, water, ecologie
- geen gimmicks of greenwashing, wel realistisch en future-proof

- complementair
- slanke organisatie: nabij, compact, wendbaar
- continuïteit, redundantie
- flexibel aanspreekbaar
- dialoog
- experten op maat

- passie voor wetenschap & onderzoek
- unieke kennis & ervaring in R&D programmatie & design
- eigen ontwikkelde methodiek en integrale ontwerpbenadering
- ontwerpend onderzoek vanaf het begin: analyse, visie, concept > ontwerp

ONTWERPPROCES Resultaat toekomstresistent



- 1** ONDERZOEK
- 2** VISIE
- 3** CONCEPT & ONTWERPBASIS
- 4** PROGRAMMA
- 5** DOELSTELLINGEN ONTWERP
- 6** UITVOERING



1. ONDERZOEK opdracht en context begrijpen



KWALITEITEN | KNELPUNTEN | KANSEN





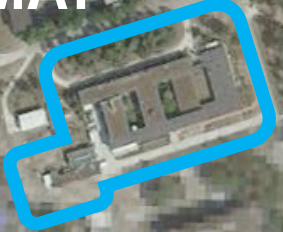
VITO3



MAN



MAT



LCV

SAM





2. VISIE uitdagingen en ambities scherpstellen

VERTREKKEND VANUIT EEN SITE DIE...

is uitgegroeid tot een conglomeraat van structuren die de beschikbare ruimte vullen

uit gebouwen bestaat die niet aantrekkelijk zijn voor nieuwe medewerkers

een afbrokkelend onderzoeksgebouw en verouderde personeelsvoorzieningen bevat

te maken heeft met inefficiënte opslag en logistiek



RICHTING EEN SITE DIE...



trots uitstraalt op haar klanten

personeel motiveert

veilige praktijken aanmoedigt

een gezonde omgeving laat zien

ruimte biedt voor een bloeiend bedrijf

innovatie en onderzoek stimuleert

gemakkelijk nieuw talent aantrekt

een geweldige plek is om te werken





3. CONCEPT

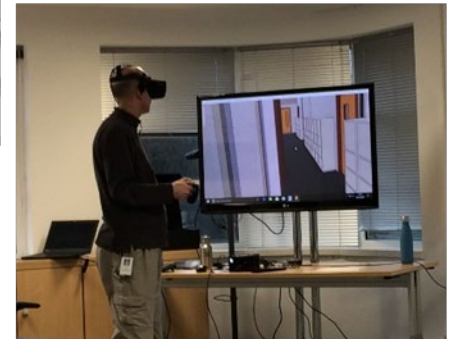
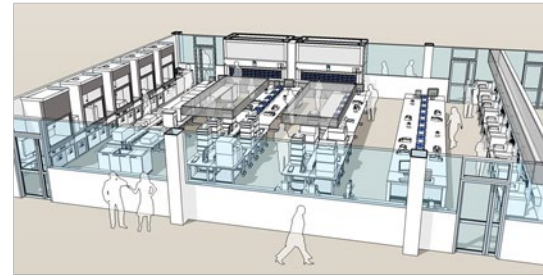
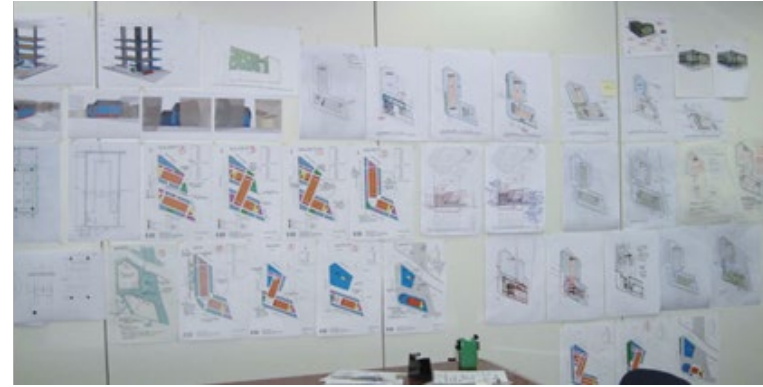
STAKEHOLDER MANAGEMENT

gebruikers graag actief betrekken

samen programma en ambitie scherpstellen

opties duidelijk voorstellen

geïnformeerde keuzes helpen maken



6	Option 7	
sh	remodel	
ption	prepare in D remodeled	pe
ldg	leave as is and use second floor for	leave as l
tion -B1?	scope	
	low	
st	higher	
	low assuming one bldg D	
	low	

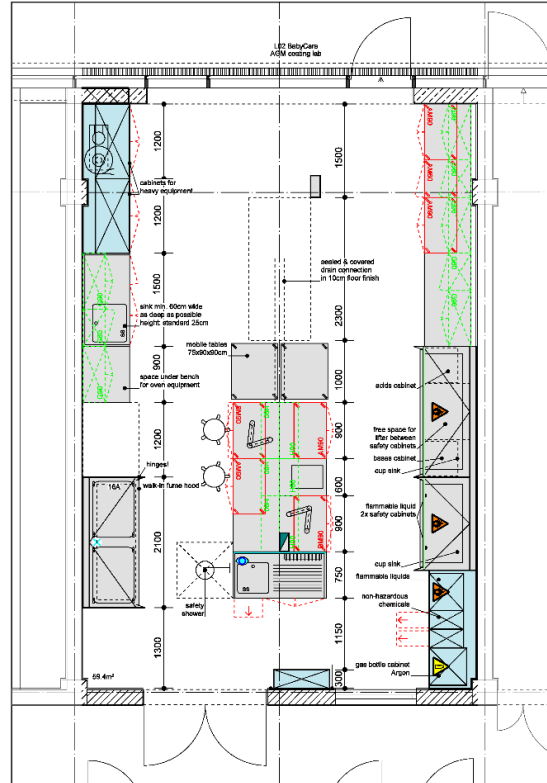




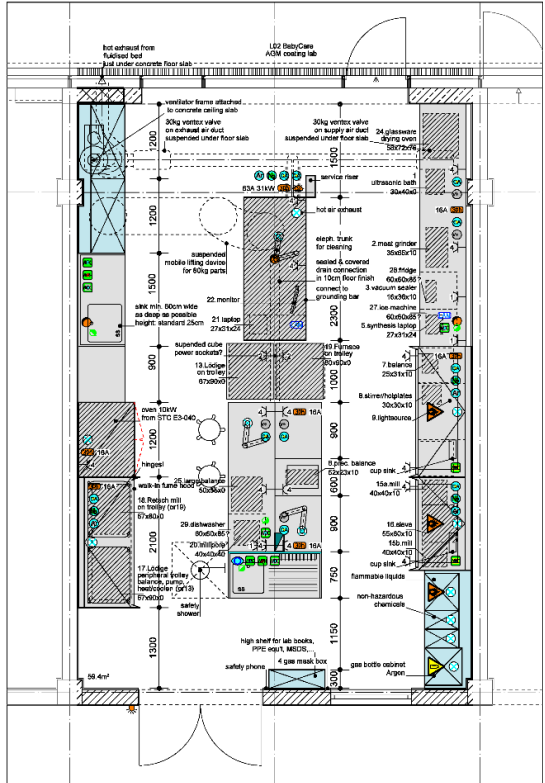
3. ONTWERPBASIS

DETAIL ONTWERP uitwerking van de technische details → prijsvorming, uitvoering

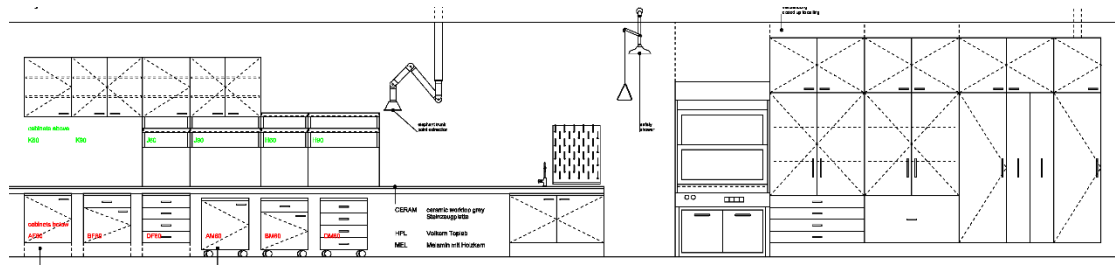
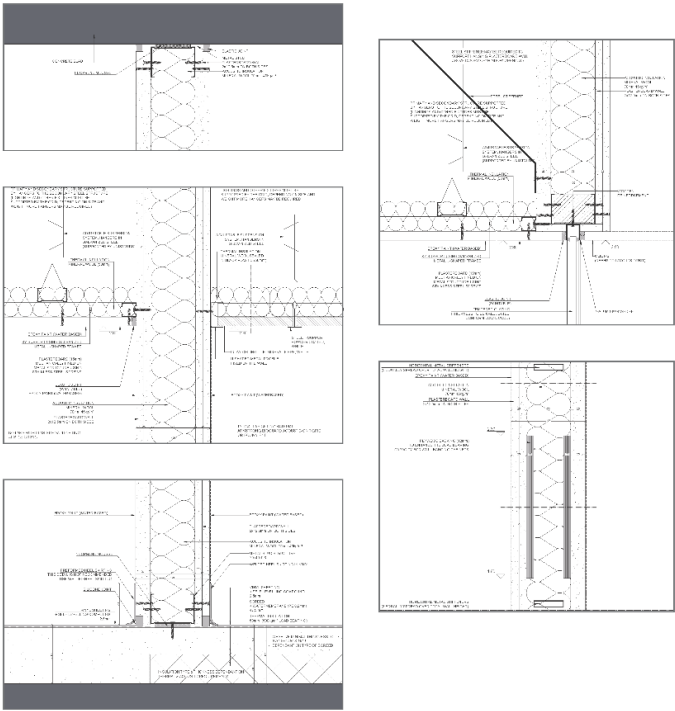
ROOM DATA SHEET		
ROOM	coating lab	DATE OF THIS SHEET
NO. 100		2018-08-15
DESCRIPTION	coating lab	100
LOCATION	100	
DESIGNER	100	
DATE	100	
REVISIONS		
NO.	DESCRIPTION	DATE
1	ISSUED FOR PERMIT	2018-08-15
2	ISSUED FOR CONSTRUCTION	2018-08-15
3	ISSUED FOR CONSTRUCTION	2018-08-15
4	ISSUED FOR CONSTRUCTION	2018-08-15
5	ISSUED FOR CONSTRUCTION	2018-08-15
6	ISSUED FOR CONSTRUCTION	2018-08-15
7	ISSUED FOR CONSTRUCTION	2018-08-15
8	ISSUED FOR CONSTRUCTION	2018-08-15
9	ISSUED FOR CONSTRUCTION	2018-08-15
10	ISSUED FOR CONSTRUCTION	2018-08-15
11	ISSUED FOR CONSTRUCTION	2018-08-15
12	ISSUED FOR CONSTRUCTION	2018-08-15
13	ISSUED FOR CONSTRUCTION	2018-08-15
14	ISSUED FOR CONSTRUCTION	2018-08-15
15	ISSUED FOR CONSTRUCTION	2018-08-15
16	ISSUED FOR CONSTRUCTION	2018-08-15
17	ISSUED FOR CONSTRUCTION	2018-08-15
18	ISSUED FOR CONSTRUCTION	2018-08-15
19	ISSUED FOR CONSTRUCTION	2018-08-15
20	ISSUED FOR CONSTRUCTION	2018-08-15
21	ISSUED FOR CONSTRUCTION	2018-08-15
22	ISSUED FOR CONSTRUCTION	2018-08-15
23	ISSUED FOR CONSTRUCTION	2018-08-15
24	ISSUED FOR CONSTRUCTION	2018-08-15
25	ISSUED FOR CONSTRUCTION	2018-08-15
26	ISSUED FOR CONSTRUCTION	2018-08-15
27	ISSUED FOR CONSTRUCTION	2018-08-15
28	ISSUED FOR CONSTRUCTION	2018-08-15
29	ISSUED FOR CONSTRUCTION	2018-08-15
30	ISSUED FOR CONSTRUCTION	2018-08-15
31	ISSUED FOR CONSTRUCTION	2018-08-15
32	ISSUED FOR CONSTRUCTION	2018-08-15
33	ISSUED FOR CONSTRUCTION	2018-08-15
34	ISSUED FOR CONSTRUCTION	2018-08-15
35	ISSUED FOR CONSTRUCTION	2018-08-15
36	ISSUED FOR CONSTRUCTION	2018-08-15
37	ISSUED FOR CONSTRUCTION	2018-08-15
38	ISSUED FOR CONSTRUCTION	2018-08-15
39	ISSUED FOR CONSTRUCTION	2018-08-15
40	ISSUED FOR CONSTRUCTION	2018-08-15
41	ISSUED FOR CONSTRUCTION	2018-08-15
42	ISSUED FOR CONSTRUCTION	2018-08-15
43	ISSUED FOR CONSTRUCTION	2018-08-15
44	ISSUED FOR CONSTRUCTION	2018-08-15
45	ISSUED FOR CONSTRUCTION	2018-08-15
46	ISSUED FOR CONSTRUCTION	2018-08-15
47	ISSUED FOR CONSTRUCTION	2018-08-15
48	ISSUED FOR CONSTRUCTION	2018-08-15
49	ISSUED FOR CONSTRUCTION	2018-08-15
50	ISSUED FOR CONSTRUCTION	2018-08-15
51	ISSUED FOR CONSTRUCTION	2018-08-15
52	ISSUED FOR CONSTRUCTION	2018-08-15
53	ISSUED FOR CONSTRUCTION	2018-08-15
54	ISSUED FOR CONSTRUCTION	2018-08-15
55	ISSUED FOR CONSTRUCTION	2018-08-15
56	ISSUED FOR CONSTRUCTION	2018-08-15
57	ISSUED FOR CONSTRUCTION	2018-08-15
58	ISSUED FOR CONSTRUCTION	2018-08-15
59	ISSUED FOR CONSTRUCTION	2018-08-15
60	ISSUED FOR CONSTRUCTION	2018-08-15
61	ISSUED FOR CONSTRUCTION	2018-08-15
62	ISSUED FOR CONSTRUCTION	2018-08-15
63	ISSUED FOR CONSTRUCTION	2018-08-15
64	ISSUED FOR CONSTRUCTION	2018-08-15
65	ISSUED FOR CONSTRUCTION	2018-08-15
66	ISSUED FOR CONSTRUCTION	2018-08-15
67	ISSUED FOR CONSTRUCTION	2018-08-15
68	ISSUED FOR CONSTRUCTION	2018-08-15
69	ISSUED FOR CONSTRUCTION	2018-08-15
70	ISSUED FOR CONSTRUCTION	2018-08-15
71	ISSUED FOR CONSTRUCTION	2018-08-15
72	ISSUED FOR CONSTRUCTION	2018-08-15
73	ISSUED FOR CONSTRUCTION	2018-08-15
74	ISSUED FOR CONSTRUCTION	2018-08-15
75	ISSUED FOR CONSTRUCTION	2018-08-15
76	ISSUED FOR CONSTRUCTION	2018-08-15
77	ISSUED FOR CONSTRUCTION	2018-08-15
78	ISSUED FOR CONSTRUCTION	2018-08-15
79	ISSUED FOR CONSTRUCTION	2018-08-15
80	ISSUED FOR CONSTRUCTION	2018-08-15
81	ISSUED FOR CONSTRUCTION	2018-08-15
82	ISSUED FOR CONSTRUCTION	2018-08-15
83	ISSUED FOR CONSTRUCTION	2018-08-15
84	ISSUED FOR CONSTRUCTION	2018-08-15
85	ISSUED FOR CONSTRUCTION	2018-08-15
86	ISSUED FOR CONSTRUCTION	2018-08-15
87	ISSUED FOR CONSTRUCTION	2018-08-15
88	ISSUED FOR CONSTRUCTION	2018-08-15
89	ISSUED FOR CONSTRUCTION	2018-08-15
90	ISSUED FOR CONSTRUCTION	2018-08-15
91	ISSUED FOR CONSTRUCTION	2018-08-15
92	ISSUED FOR CONSTRUCTION	2018-08-15
93	ISSUED FOR CONSTRUCTION	2018-08-15
94	ISSUED FOR CONSTRUCTION	2018-08-15
95	ISSUED FOR CONSTRUCTION	2018-08-15
96	ISSUED FOR CONSTRUCTION	2018-08-15
97	ISSUED FOR CONSTRUCTION	2018-08-15
98	ISSUED FOR CONSTRUCTION	2018-08-15
99	ISSUED FOR CONSTRUCTION	2018-08-15
100	ISSUED FOR CONSTRUCTION	2018-08-15



furniture



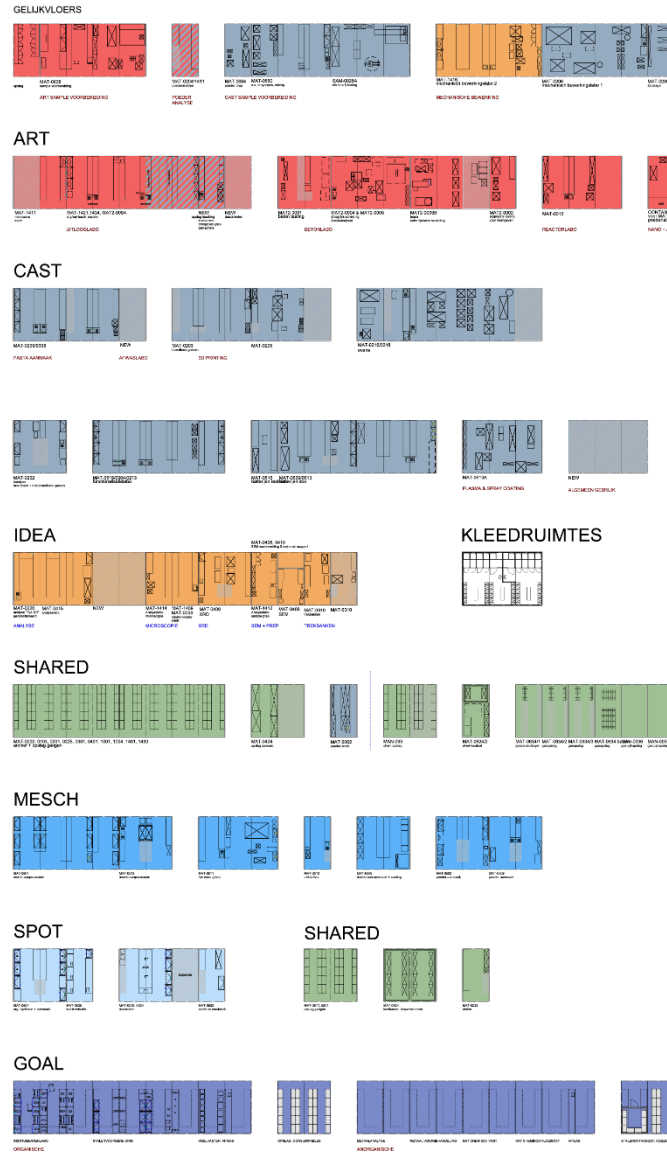
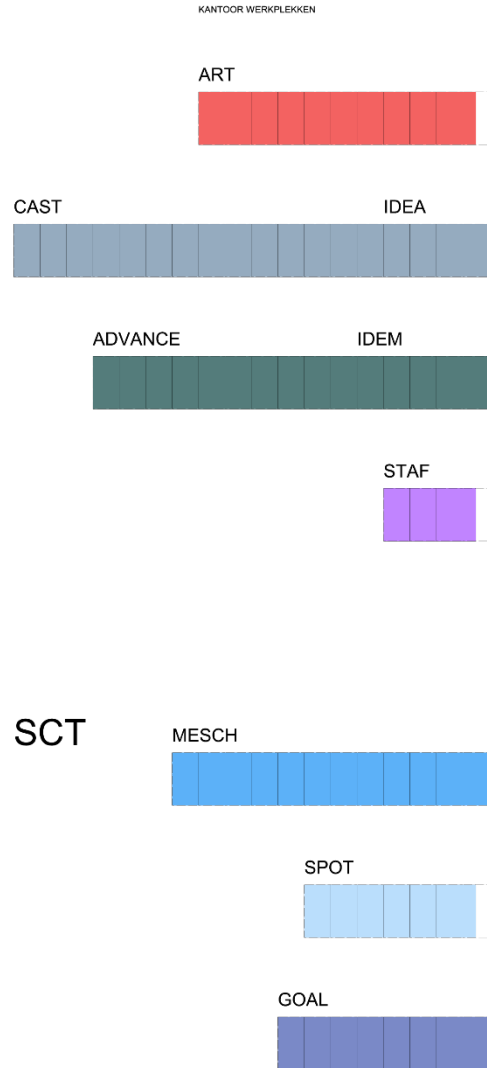
equipment + utilities



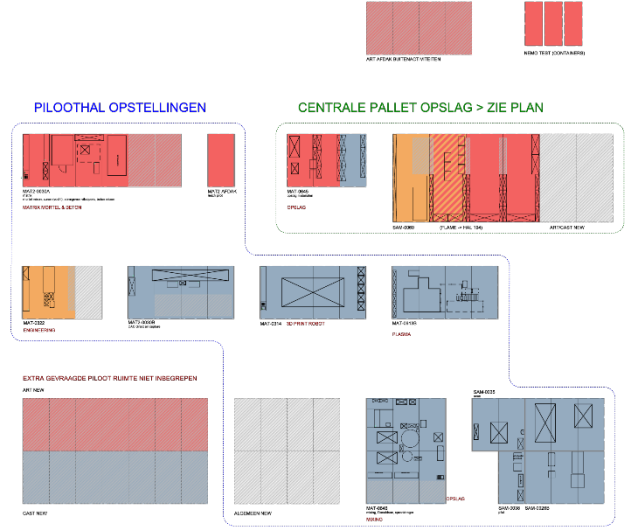


4. PROGRAMMA noden en wensen aftoetsen

SMAT



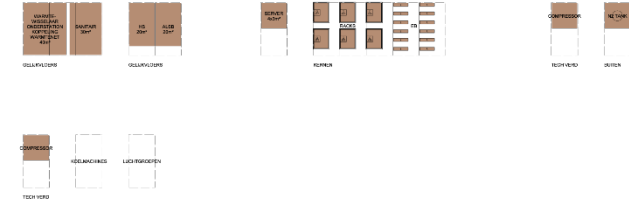
PILOOTHAL



FIETSEN



TECHNISCHE RUIMTES

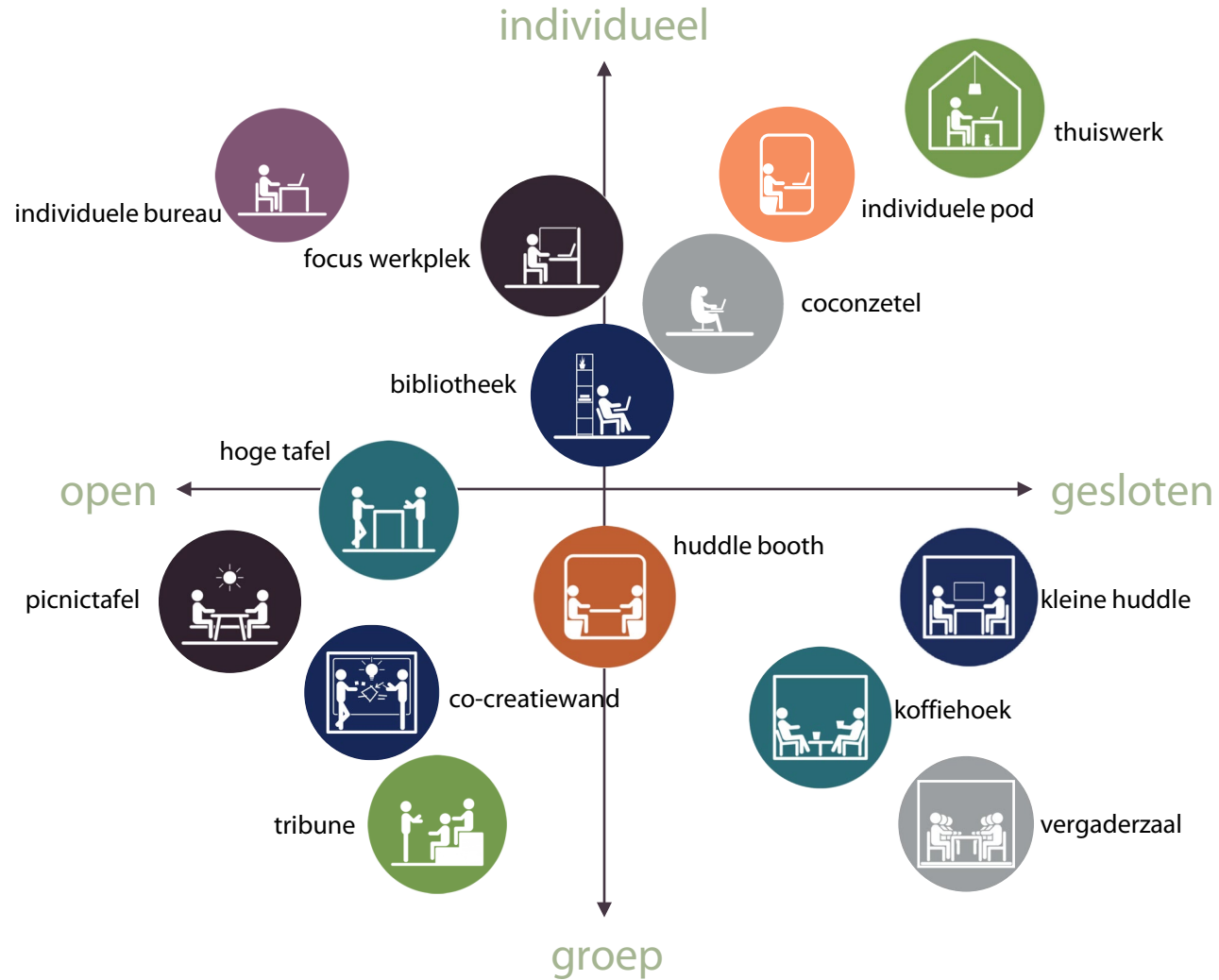


Lab & office program



4. PROGRAMMA noden en wensen aftoetsen

Variatie & balans





5. DOELSTELLINGEN van het modulair labo ontwerp



flexibel

- generieke labofunctionaliteit
- ontwerpproces stroomlijnen
- toekomstige aanpassingen eenvoudiger en goedkoper

net

- goede labo praktijken aanmoedigen
- orde en veiligheid bevorderen

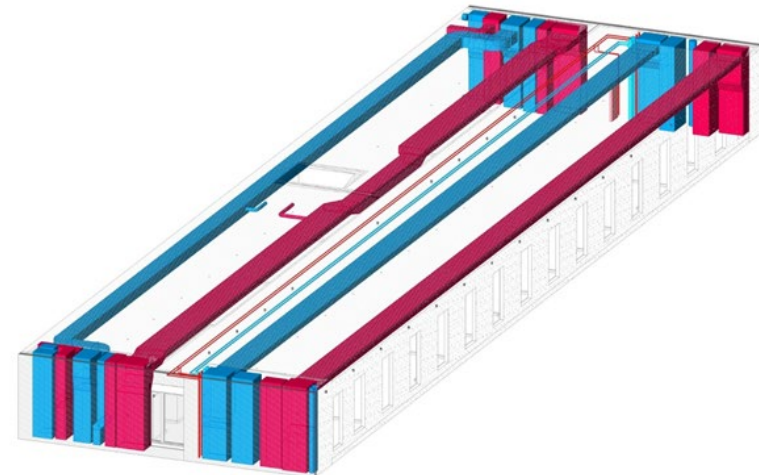
efficiënt

- optimaliseer m^1 werkvlak / m^2 vloeroppervlakte
- geïntegreerde organisatie van structuur en installat'

future proof lab – flexibiliteit:

ringstructuur voordelen voor de ventilatie:

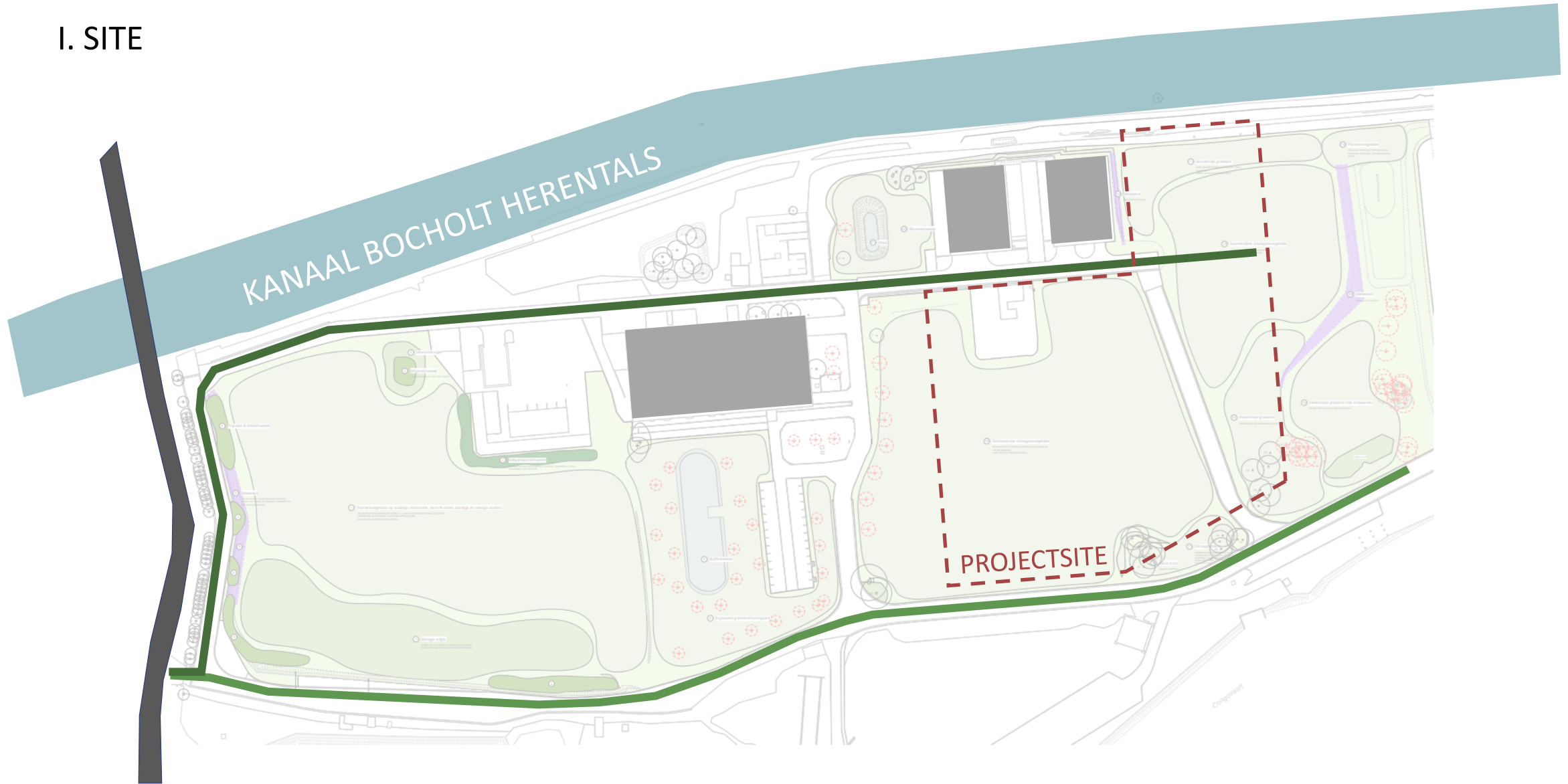
- kleinere luchtbehandelingscapaciteit door gelijktijdigheidscoëfficiënt
- kleinere back-up te voorzien
- flexibel aan te passen aan gewijzigde eisen





5. VAN PROCES NAAR BOUWVOLUMES

I. SITE





5. VAN PROCES NAAR BOUWVOLUMES

II. PROGRAMMA

OPSLAG
1.480 m²
0

LABO
10.604 m²

0 | +1 | +2

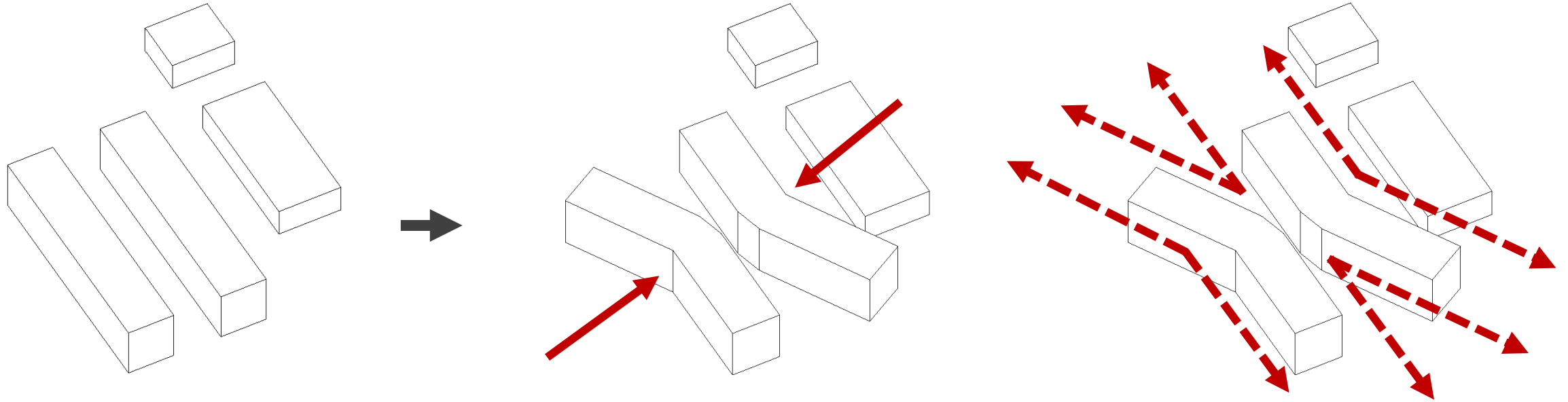
TESTHAL
1.876 m²

0



5. VAN PROCES NAAR BOUWVOLUMES

III. VOLUME





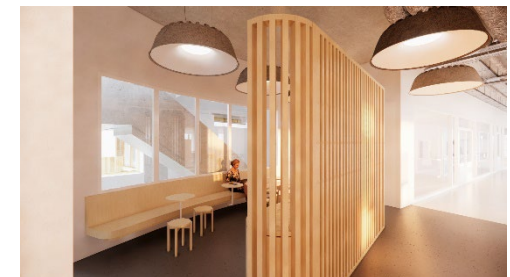
5. VAN PROCES NAAR BOUWVOLUMES

IV. ORGANISATIE





5. VERDIEPINGSPLAN & VISUALISATIE INTERIEUR





5. VISUALISATIE EXTERIEUR

